

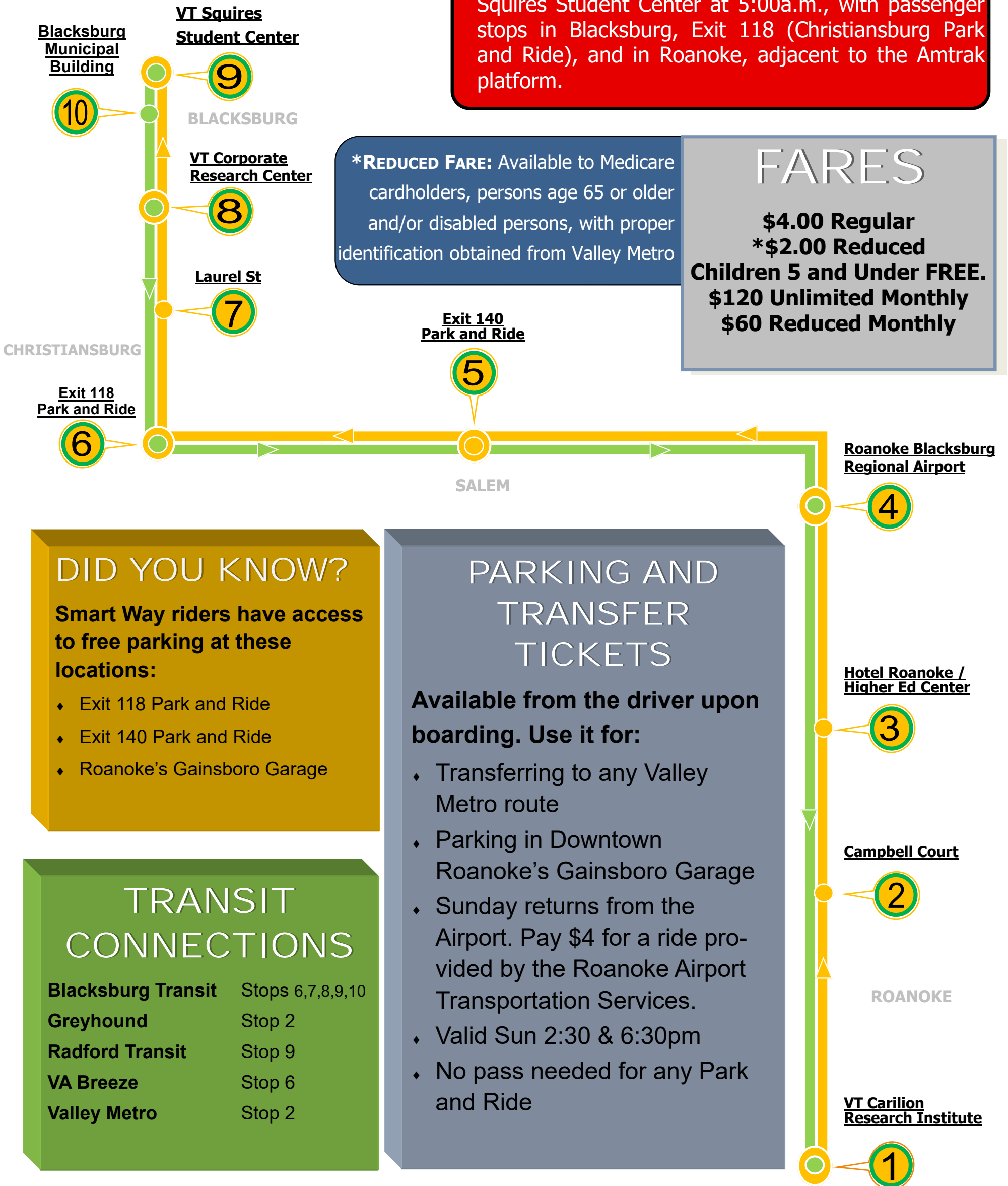


IMPORTANT NOTICE

Smart Way Base Schedule

(effective January 10, 2019)

The Smart Way Base service departs Virginia Tech/ Squires Student Center at 5:00a.m., with passenger stops in Blacksburg, Exit 118 (Christiansburg Park and Ride), and in Roanoke, adjacent to the Amtrak platform.



***REDUCED FARE:** Available to Medicare cardholders, persons age 65 or older and/or disabled persons, with proper identification obtained from Valley Metro

FARES
\$4.00 Regular
***\$2.00 Reduced**
Children 5 and Under FREE.
\$120 Unlimited Monthly
\$60 Reduced Monthly

DID YOU KNOW?
 Smart Way riders have access to free parking at these locations:

- ♦ Exit 118 Park and Ride
- ♦ Exit 140 Park and Ride
- ♦ Roanoke's Gainsboro Garage

PARKING AND TRANSFER TICKETS
 Available from the driver upon boarding. Use it for:

- ♦ Transferring to any Valley Metro route
- ♦ Parking in Downtown Roanoke's Gainsboro Garage
- ♦ Sunday returns from the Airport. Pay \$4 for a ride provided by the Roanoke Airport Transportation Services.
- ♦ Valid Sun 2:30 & 6:30pm
- ♦ No pass needed for any Park and Ride

TRANSIT CONNECTIONS

Blacksburg Transit	Stops 6,7,8,9,10
Greyhound	Stop 2
Radford Transit	Stop 9
VA Breeze	Stop 6
Valley Metro	Stop 2

**For 24hr automated information call 1-800-388-7005 or 540-982-6622
 smartwaybus.com or valleymetro.com**